



Available in 80 and 120 Gallon Universal Side/Top Connect Models

▶ 6-Year Limited Tank and Parts Warranty*

- New flexible design allows installation of the collector feed & return in either the side or top connection ports
- Brass drain valve
- Special threaded stud located near the outlet for attachment of tank sensors
- Temperature and pressure relief valve included
- High efficiency heating element
- Tank lining resists corrosion and prolongs tank life
- Anode rod equalizes aggressive water action for prolonged tank life
- Cold water inlet, hot water outlet, relief valve and anode rod at top of tank for easy access and fast, economical installation
- Automatic temperature control
- Over temperature protector

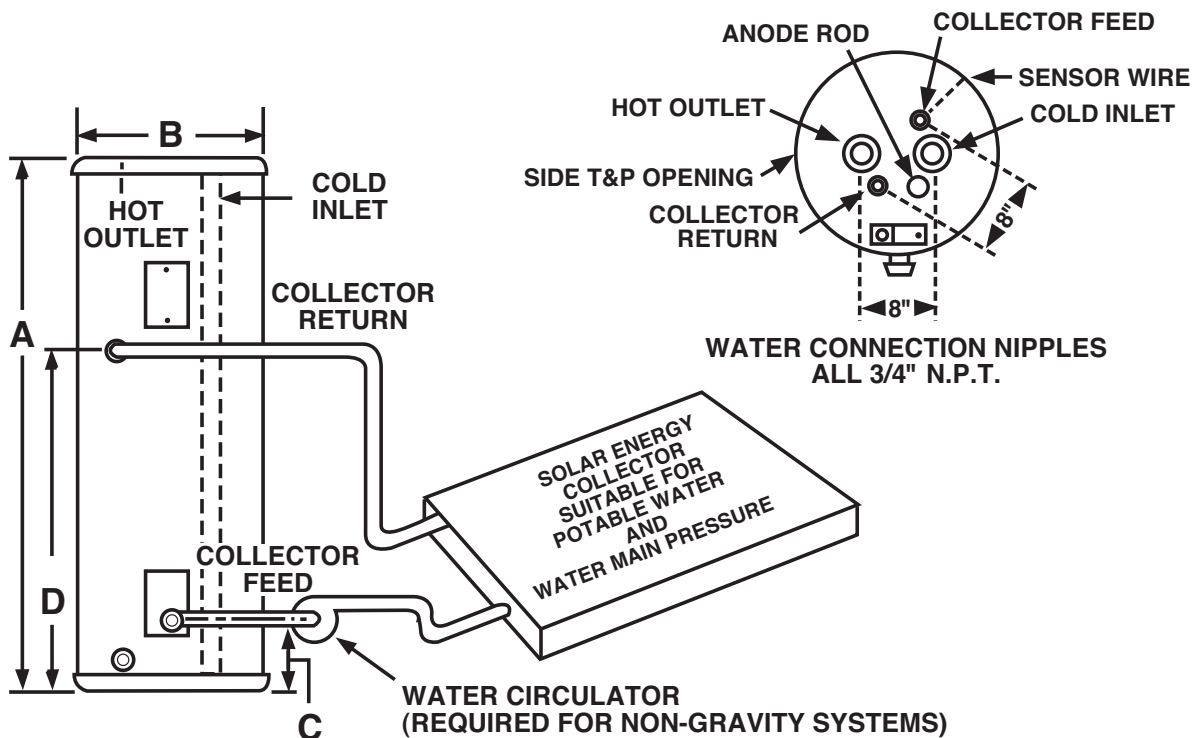
*See Residential Warranty Certificate for complete information.



DESCRIPTION				ROUGHING IN DIMENSIONS (SHOWN IN INCHES)				ENERGY INFO.	
TYPE	GAL. CAP.	MODEL NUMBER	ELEMENT WATTAGE UPPER	HEIGHT A	DIAMETER B	HEIGHT TO COLLECTOR FEED C	HEIGHT TO COLLECTOR RETURN D	APPROX. SHIP WT. (LBS.)	APPROX. R-FACTOR
UNIVERSAL SIDE/TOP CONNECT									
T A L L	80	SU80U-1	4500 W*	58-3/4	24-1/2	3	38-1/4	192	R-17.3
	120	SU120U-1	4500 W*	62	28-1/4	3-3/4	38-1/2	336	R-16.7
	80	SU80U-T	Storage Only	58-3/4	24-1/2	3	38-1/4	192	R-17.3
	120	SU120U-T	Storage Only	62	28-1/4	3-3/4	38-1/2	336	R-16.7

- * Heaters furnished with standard 240 volt AC, single phase non-simultaneous wiring and 4500 watt heating element.
- If heating elements of different wattages than those shown are demanded by zone requirements, they must be specifically requested.
- SunEarth models meet all current requirements for solar storage tanks.
- The tanks are lined and are designed to operate up to 150 PSI.

This unit uses the potable water within the tank for circulation through the solar system.



In keeping with its policy of continuous progress and product improvement, the manufacturer reserves the right to make changes without notice.